



# Company profile & Exhibits in ICALEPCS 2009



Hironori Horinouchi  
SBU2 product manager  
Rittal K.K.



FRIEDHELM LOH GROUP



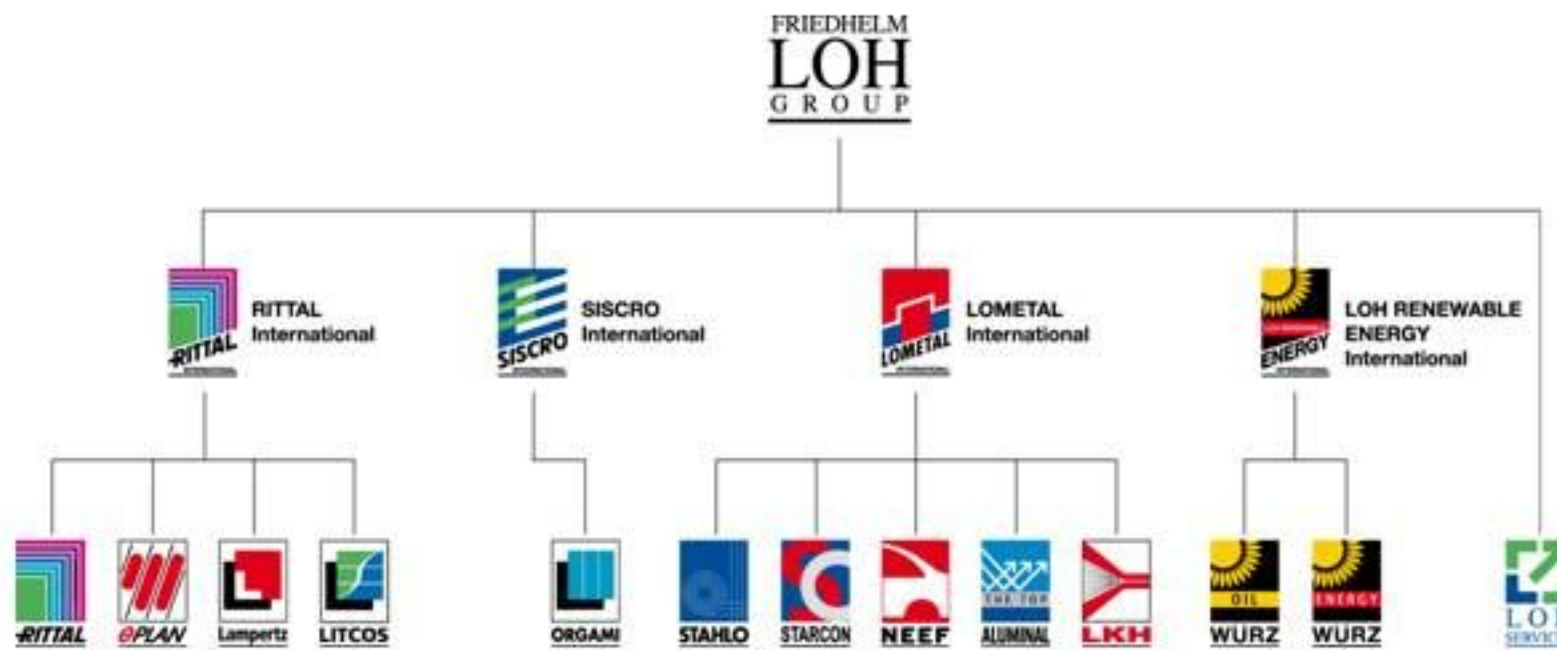
# Company profile



Rittal - A powerful alliance with the Friedhelm Loh Group

## A global group:

- 12,000 employees world-wide
- 14 companies
- Numerous subsidiaries at home and abroad



# Company profile



Rittal today – At a glance

**The world's leading supplier of enclosure and housing systems:**

- **More than 10.000 committed staff worldwide**
- **60 international subsidiaries**
- **Over 70 international agencies**
- **19 high-tech-production facilities around the world**
- **Over 150 delivery centres worldwide**





**Goal, Rittal join ICALEPCS 2009**



**MicroTCA will be the key to success  
for Next Generation Accelerators Computing.**

**Rittal support Global Accelerators using  
MicroTCA.**

**$\mu$ TCA™**

## PicoTCA

### Features

- **2 U/19" 12 AMC-slot MicroTCA chassis**
- **MicroTCA backplane supports AMC.0, AMC.1, AMC.2, AMC.3 and AMC.4**
- **Integrated power management board with EMMC**
- **Telco Alarm function (optional)**
- **2 integrated Cooling Units**
- **Integrated 450W PSU 90 -264 VAC (No redundancy)**
- **Supports Full-size and Compact AMCs**
- **Support for up to 12.5 Gb/s**
- **JTAG connector on backplane**
- **IPMI v1.5 compliant**
- **Supports Hot Swap per AMC.0**



**$\mu$ TCA™**

## CubeTCA

### Features

- **6 AMC-slot MicroTCA chassis**
- **MicroTCA backplane supports AMC.0, AMC.1, AMC.2, AMC.3 and AMC.4**
- **Integrated power management board with EMMC**
- **Telco Alarm function (optional)**
- **1 integrated Cooling Unit**
- **Integrated 350W PSU 90 -264 VAC (No redundancy)**
- **Supports 4 Full-size and 2 Compact AMC's or 5 Fullsize AMC's**
- **Support for up to 12.5 Gb/s**
- **JTAG connector on backplane**
- **IPMI v1.5 compliant**
- **Supports Hot Swap per AMC.0**



**$\mu$ TCA™**



# Exhibits in ICALEPCS 2009



**Live demonstration of PicoTCA  
installed MCH or Pr-AMC now !**



## Don't miss Rittal booth!